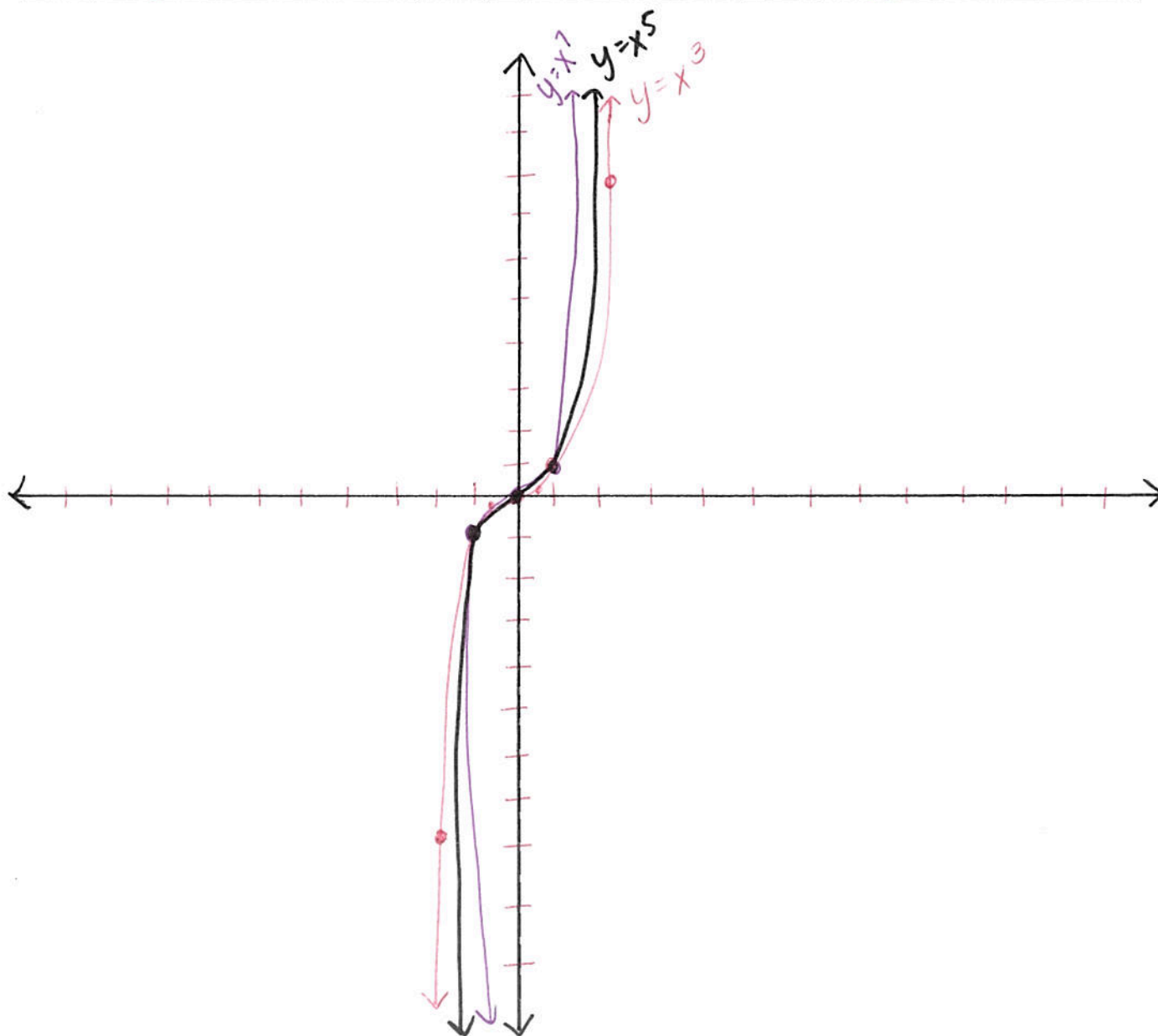


PARENT ODD FUNCTIONS

Discovery: Find coordinate points in a table and then graph each of the following

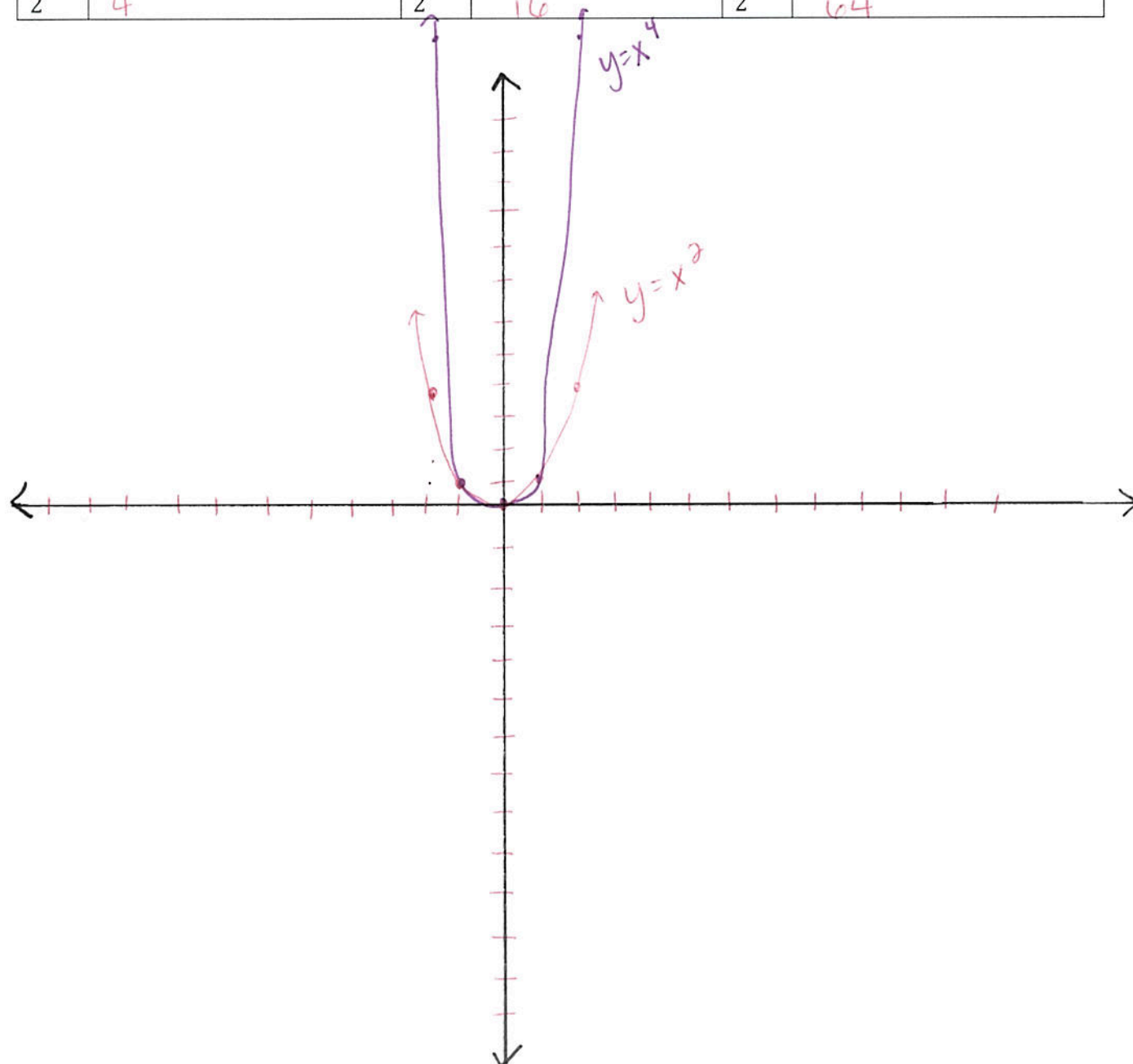
$y = x^3$		$y = x^5$		$y = x^7$	
x	y	x	y	x	y
-2	-8	-2	-32	-2	-128
-1	-1	-1	-1	-1	-1
-0.5	-0.125	-0.5	-0.03125	-0.5	-0.0078125
0	0	0	0	0	0
0.5	0.125	0.5	0.03125	0.5	0.0078125
1	1	1	1	1	1
2	8	2	32	2	128



PARENT EVEN FUNCTIONS

Discovery: Find coordinate points in a table and then graph each of the following.

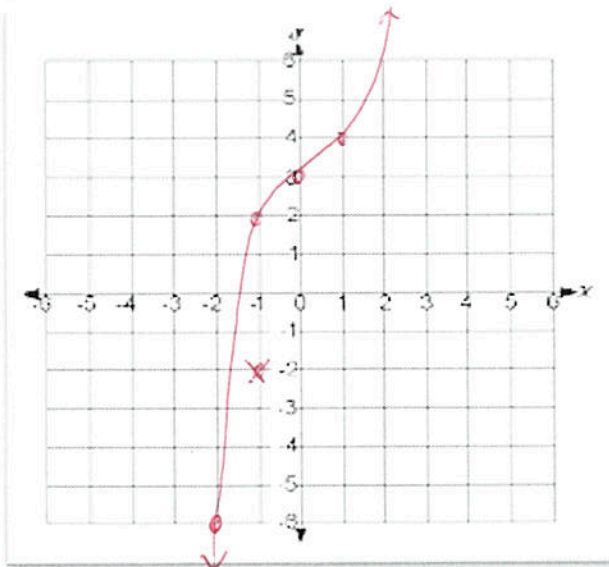
$y = x^2$		$y = x^4$		$y = x^6$	
x	y	x	y	x	y
-2	4	-2	16	-2	64
-1	1	-1	1	-1	1
-0.5	0.25	-0.5	0.0625	-0.5	0.015625
0	0	0	0	0	0
0.5	0.25	0.5	0.0625	0.5	0.015625
1	1	1	1	1	1
2	4	2	16	2	64



Examples:
1.) $y = x^3 + 3$

x	y
-2	-5
-1	2
0	3
1	4
2	11

up 3!

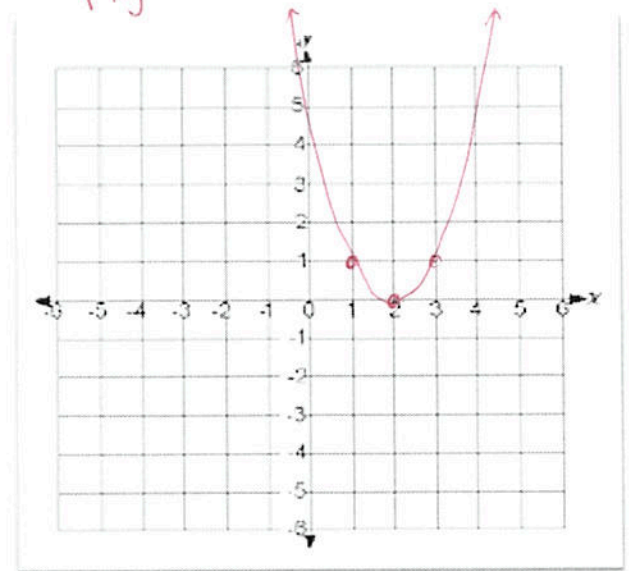


2.) $y = (x-2)^4$

x	y
-2	256
-1	81
0	16
1	1
2	0

x	y
3	1
4	16

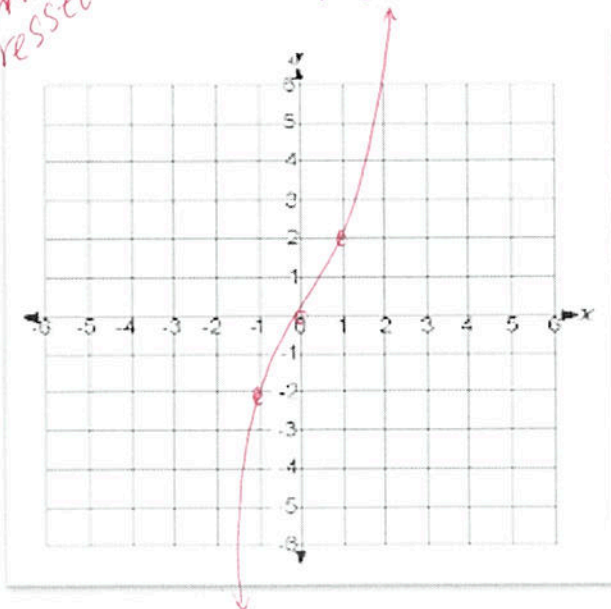
right 2



3.) $y = 2x^2$

x	y
-2	8
-1	2
0	0
1	2
2	8

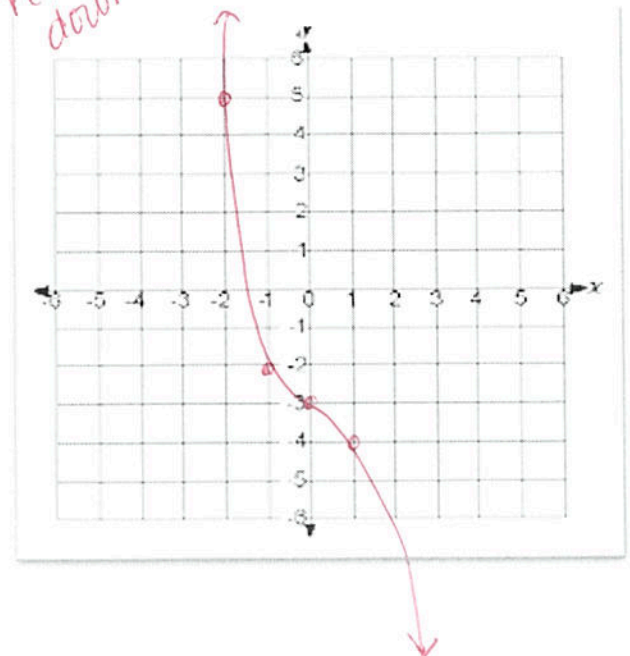
~~stretched~~
compressed



4.) $y = -x^3 - 3$

x	y
-2	5
-1	-2
0	-3
1	-4
2	-11

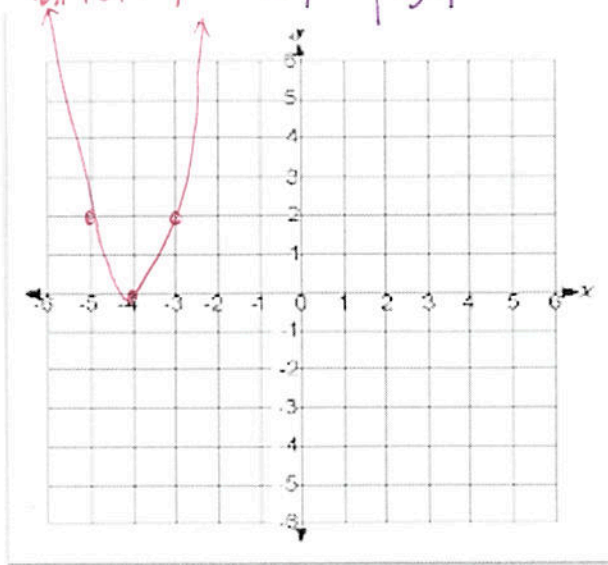
reflect down 3



5.) $y = 2(x+4)^3$

~~stretched~~
compressed
left + 4

x	y
-3	2
-4	0
-5	2
-6	16
-7	54



6.) $y = \frac{1}{2}x^4 - 2$

down 2
stretched

x	y
-2	6
-1	-1.5
0	-2
1	-1.5
2	6

